

# MR-4TCSD SETTING SHEET

CIRCUIT **Tamiya USA, Reedy TC Race 2003**

DRIVER **Masami Hirose** DATE **25/05/2003**

Environment  Indoor  Outdoor  
 Surface  Asphalt  Concrete  Carpet  
 Grip  High  Regular  
 Condition  Flat  Bumpy

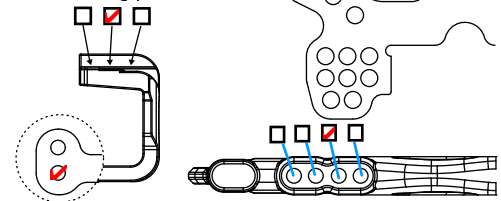
Made interactive by MO

## FRONT

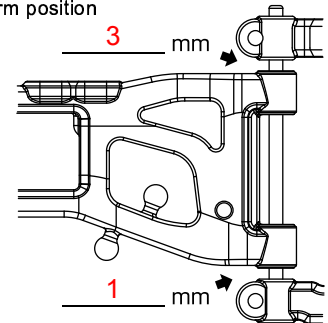
Drivetrain  One-way  
 Ball diff  
 Solid  
 Anti-roll bar  None  
 Upper  
 Lower  
1.2mm  
 Hub carrier 4 deg  
 Camber -0.5  
 Toe angle 0  
 Suspension mount skid angle 0  
 Suspension mount height spacer  
 (front & rear) .8 rear mm

Diaphragm  \_\_\_\_\_  
 Aeration   
 Shock body  SSS  
 SS  
 Shock end  Long  
 Short  
 \_\_\_\_\_  
 Length 60.0 mm  
 Spring protot.  
 Oil #500  
 Piston #3

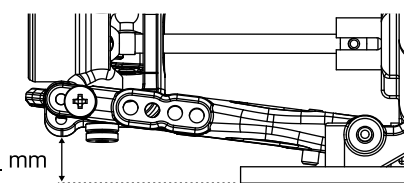
Upper camber link & shock mounting position



Lower suspension arm position



Droop height

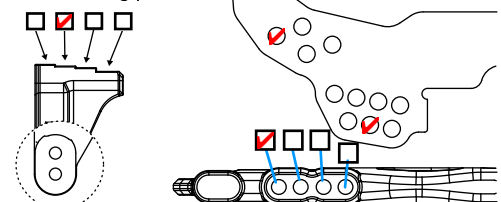


## REAR

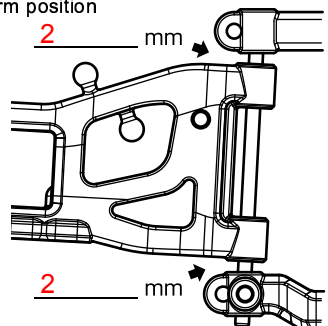
Anti-roll bar  None  
 Upper  
 Lower  
 Camber 0  
 Suspension mount (toe angle)  
 1 deg  
 2 deg  
 3 deg  
 Suspension mount skid angle 0  
 Suspension mount height spacer  
 (front & rear) 0 mm

Diaphragm  \_\_\_\_\_  
 Aeration   
 Shock body  SSS  
 SS  
 Shock end  Long  
 Short  
 \_\_\_\_\_  
 Length 59.5 mm  
 Spring green  
 Oil #450  
 Piston #3

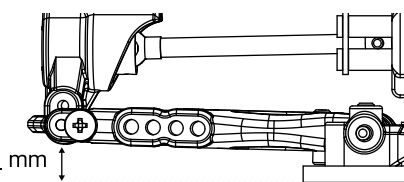
Upper camber link & shock mounting position



Lower suspension arm position



Droop height



## OTHER

Tire Take Off CS-27GL  
 Inner pre-glued control  
 Wheel tyre-insert-wheel  
 Traction additive  FXII  
 Spur gear 48 P 78 T  
 Pinion gear 48 P 22 T  
 Gear ratio 8.35 : 1  
 = spur gear / pinion gear x 2.35 (internal drive ratio)  
 Ride height F 3.5 mm  
R 4.0 mm

Motor Reedy KR 10TW  
 Battery Yokomo 3300  
 ESC GM SX9  
 Front body mount position  
 Inner  
 Outer  
 Body Protoform Alfa 2.0  
 Wing standard

### COMMENT

rear tower on front, upper outer shock pos., lower inner link pos.  
 prototype lower rear pivot blocks, prototype front spring is new  
 14525, between green and orange. (std 14525 between y & g)